

Floor Area  
19m<sup>2</sup>



Beds

-



Powder Room

1



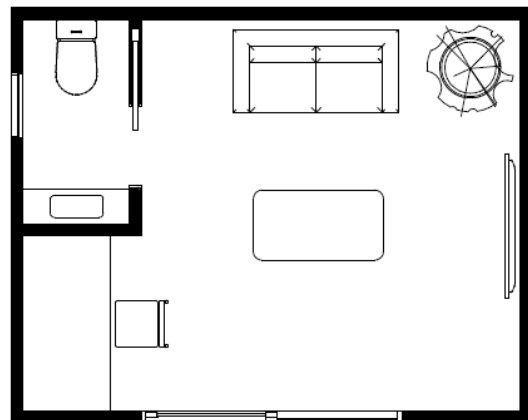
Kitchen

-



## Studio S.3

A comfortable room offering flexibility for the everyday backyard. Whether you are after some extra space, an office or just somewhere to relax, this minimalist building caters to everyone's needs.



FLOOR plan

approx. 5.4m x 3.6m